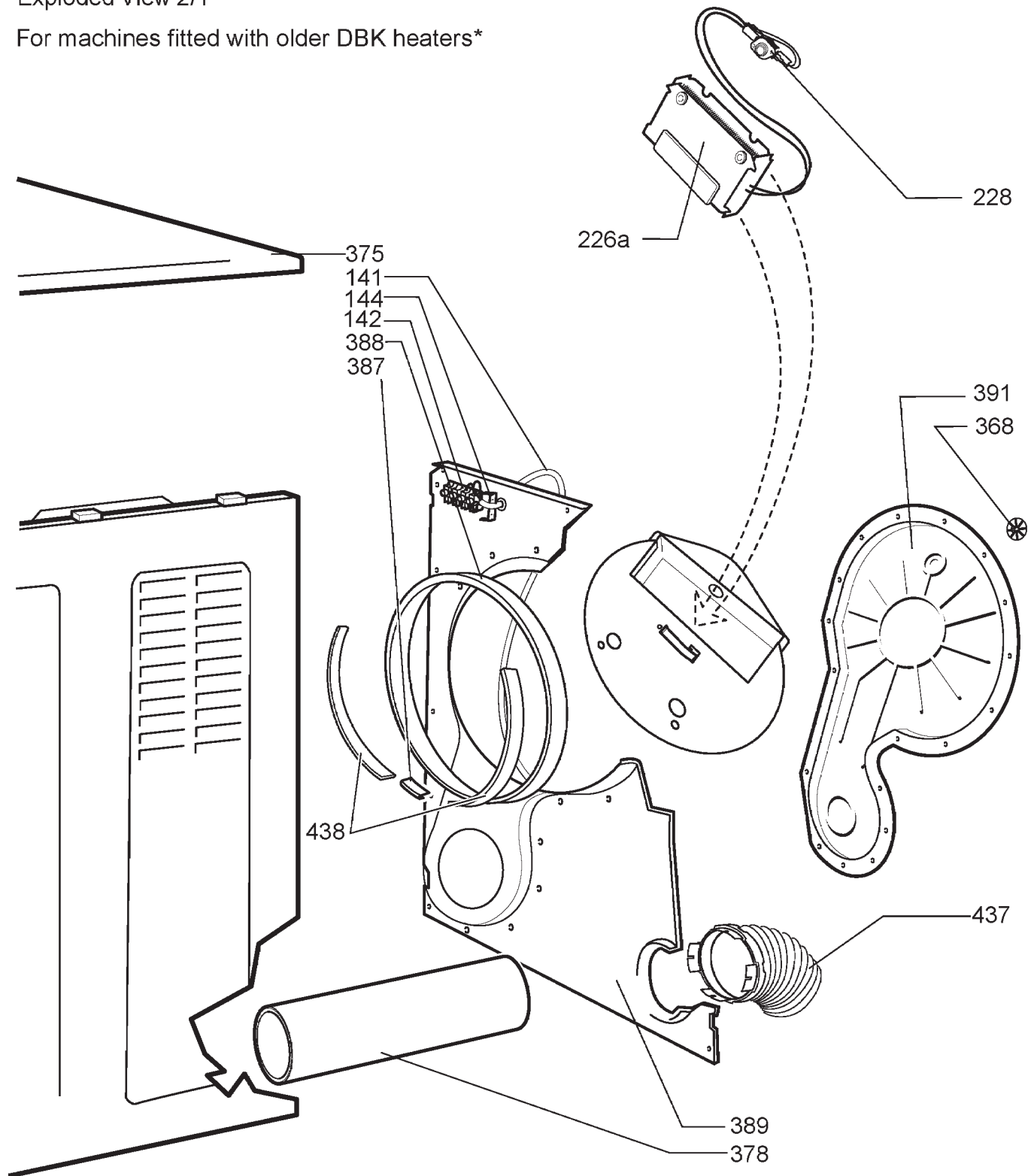


## Exploded View 2/1

For machines fitted with older DBK heaters\*



\*DBK heaters (item 226a) have now been replaced by new sheathed heaters (see exploded view 2/2). Please refer to the parts list for details of when the new heaters were introduced.

If in doubt, please use these exploded views to visually identify which heater has been fitted as the two are easily distinguished.